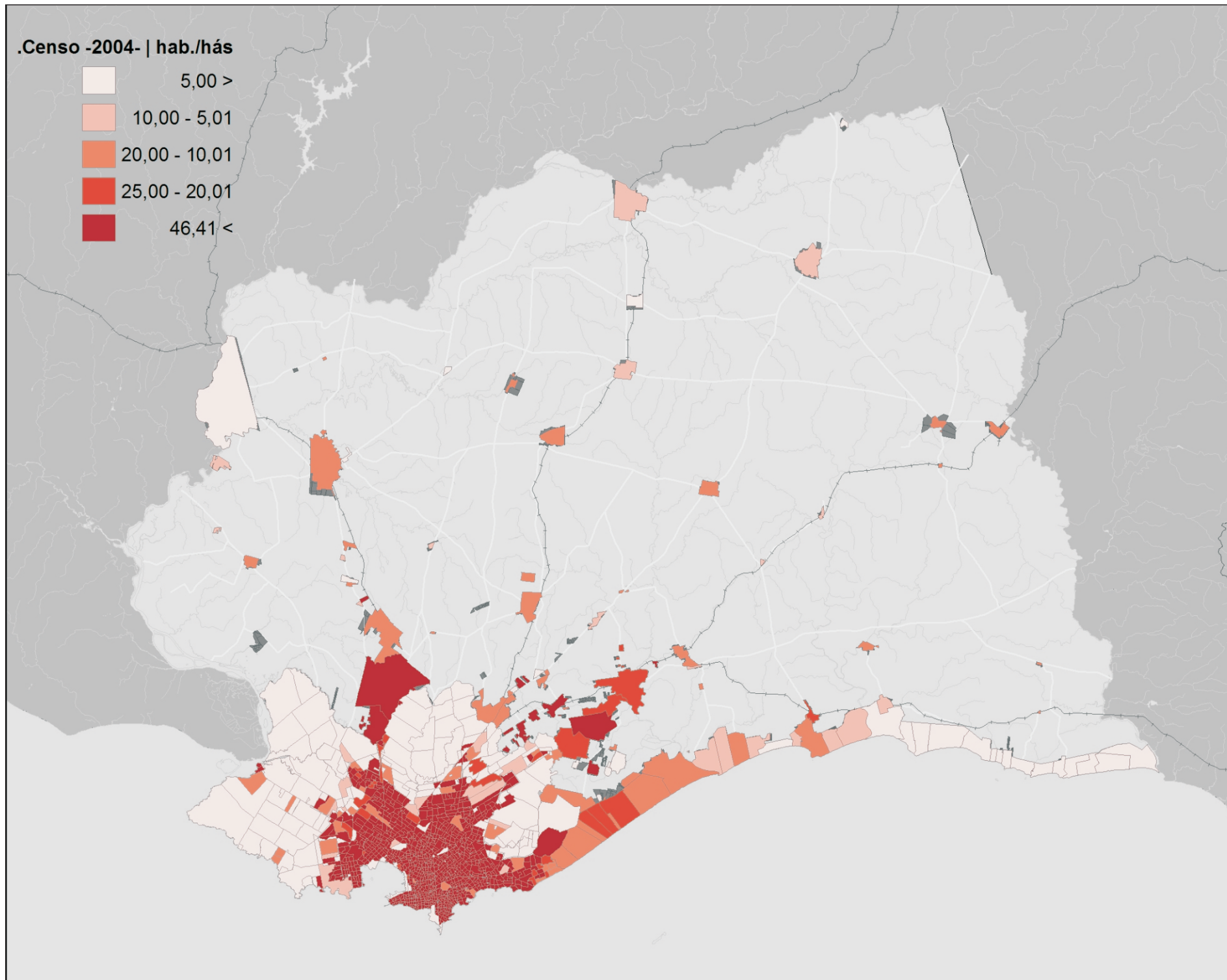
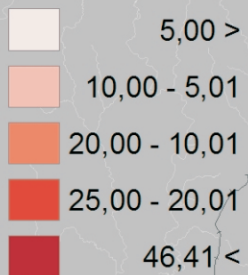


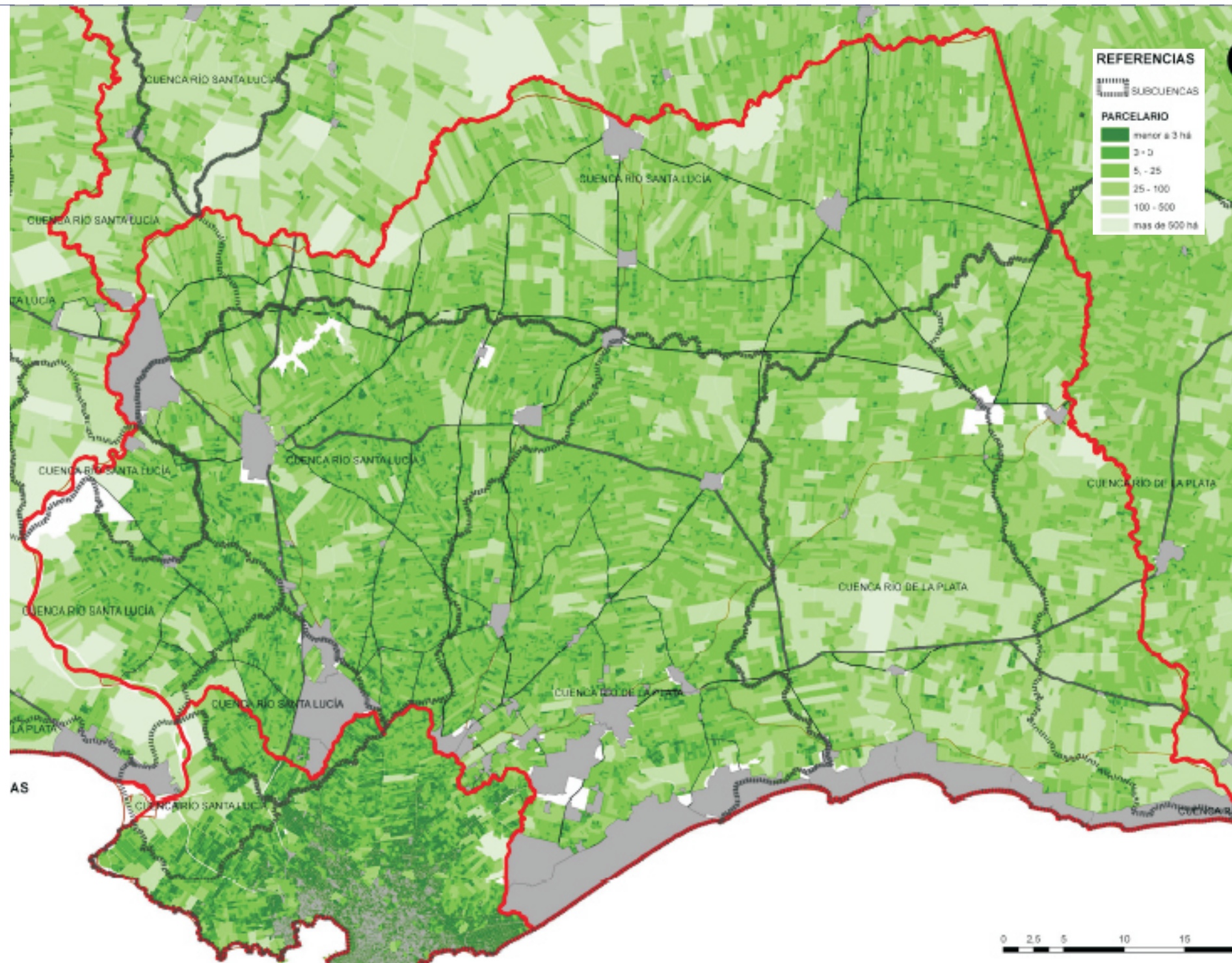
Densidad de
población

Lámina: 1



.Censo -2004- | hab./hás



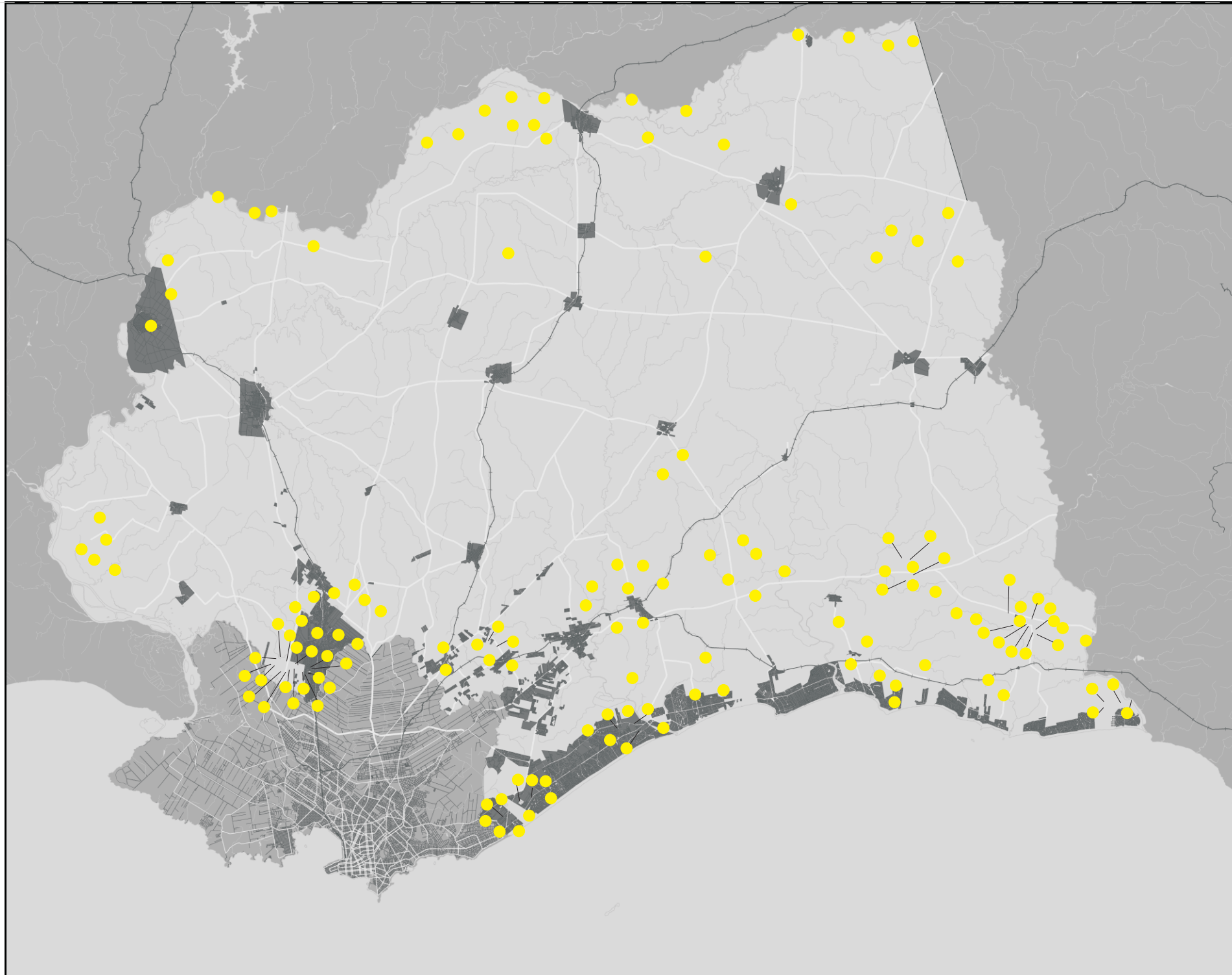


Estructura predial.

Lámina: 2



0 2.5 5 10 15



Actividad extractiva
minera.

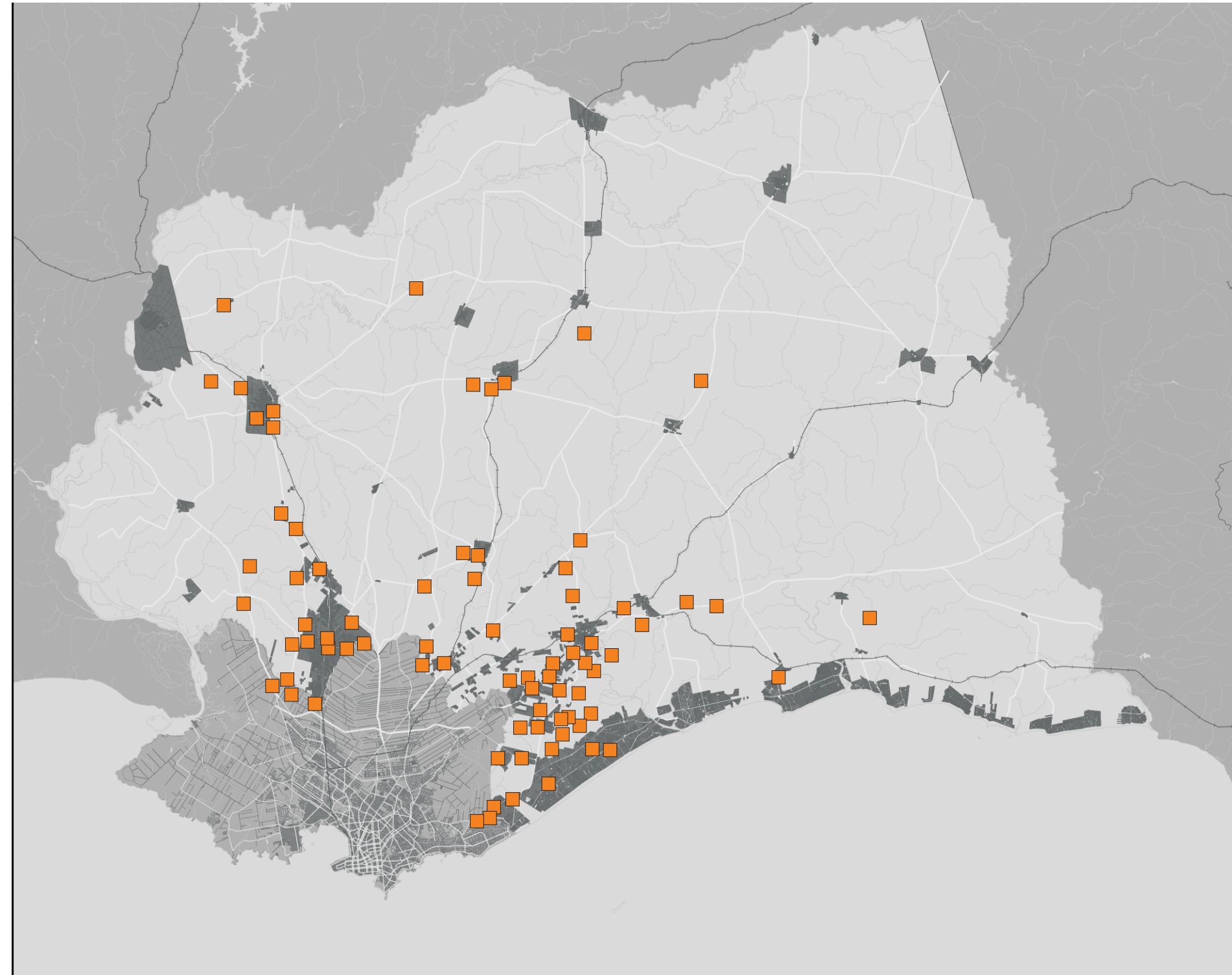
Lámina: 3

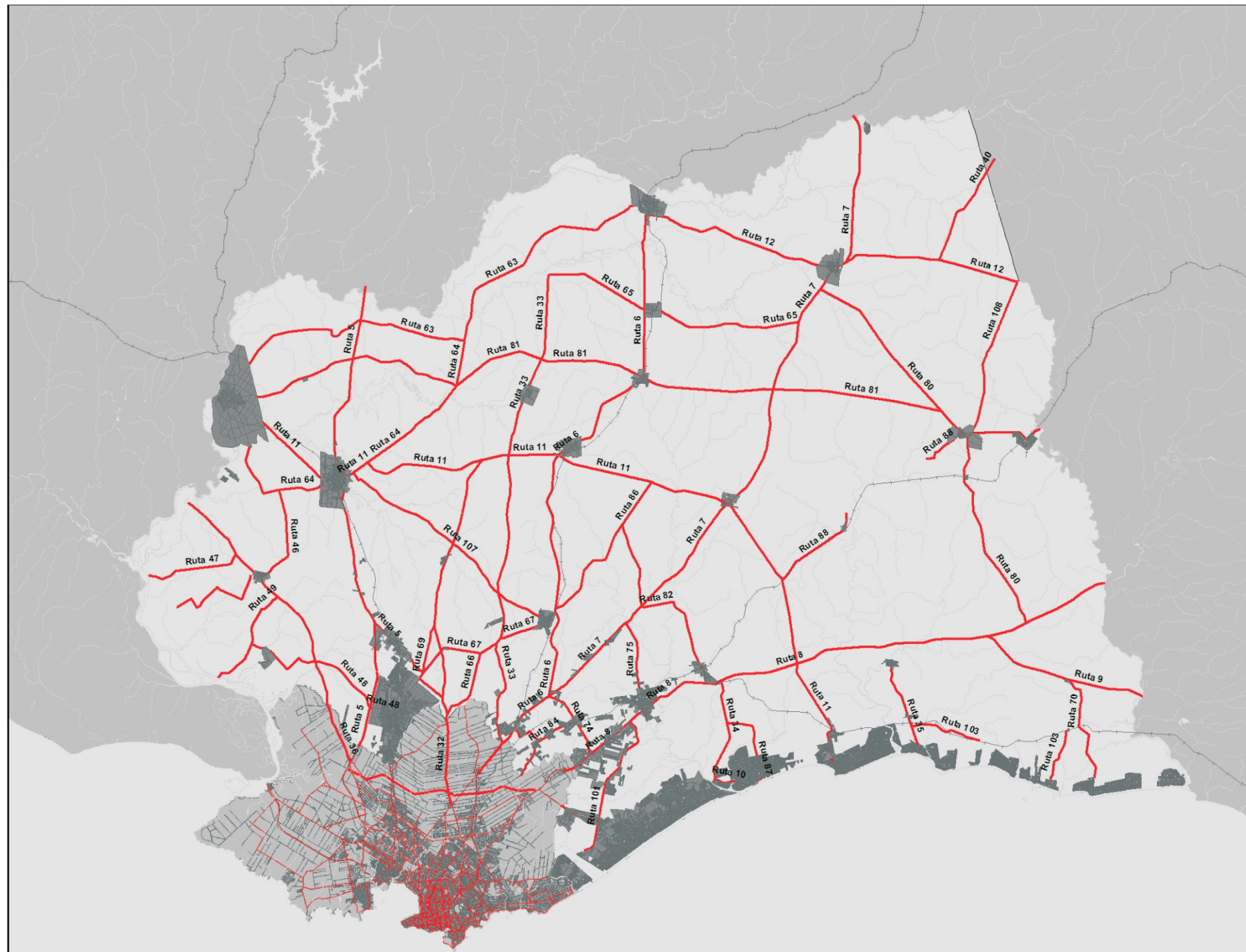




**Industrias-
con tramite SADI:**
(Solicitud de Autorización
de desagüe Industrial)

Lámina: 4





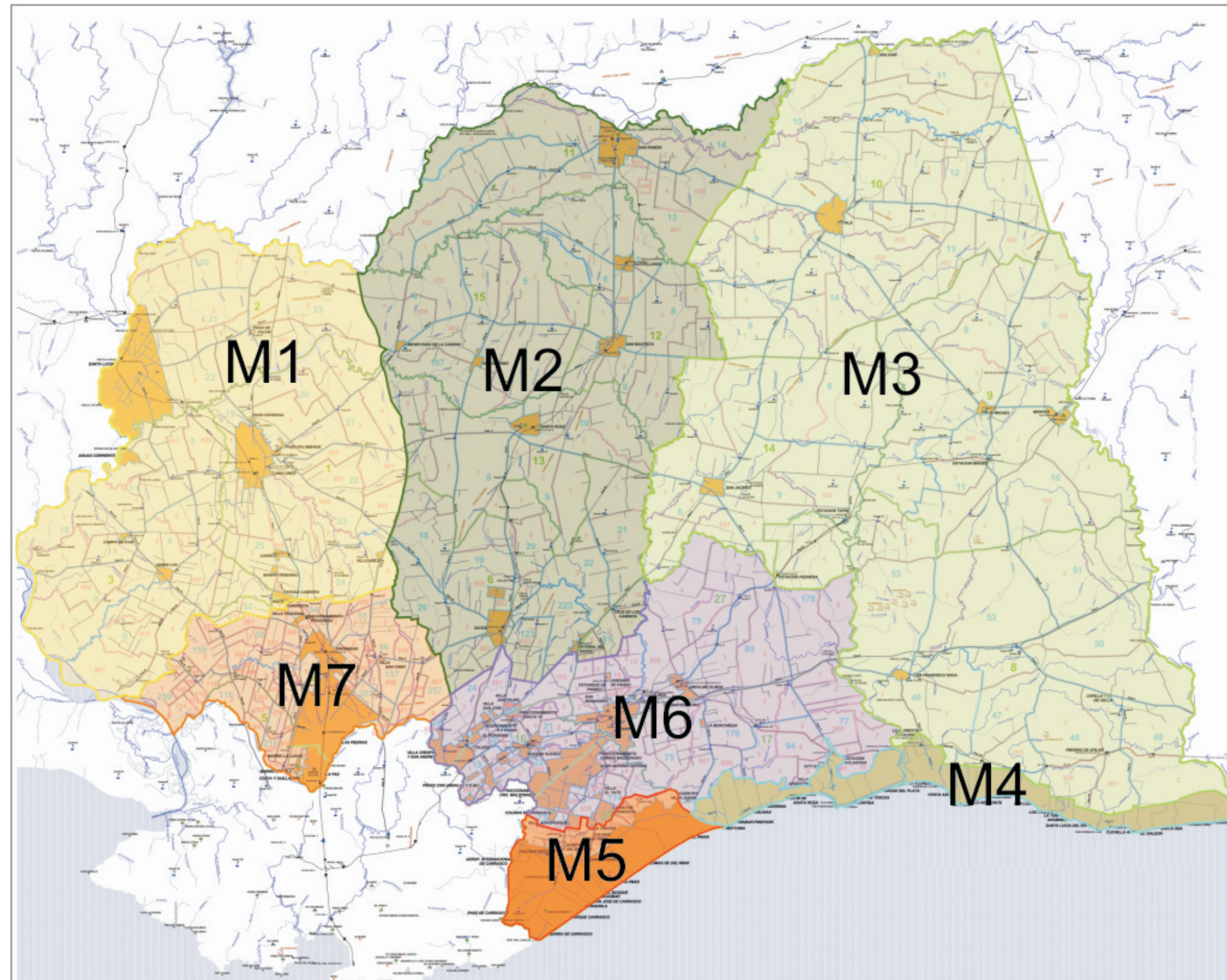
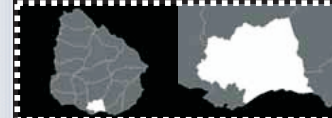
Red vial.
Rutas y caminería rural

Lámina: 5



Microrregiones.

Lámina: 6



PLAN DE DESARROLLO
ESTRATÉGICO
CANELONES CAPITAL

PLAN DE DESARROLLO
ESTRATÉGICO
NORESTE DE CANELONES

DIRECTRICES DE ORDENAMIENTO
TERRITORIAL DE LA CIUDAD DE PANDO

PLAN DE RUTA 5 SUR

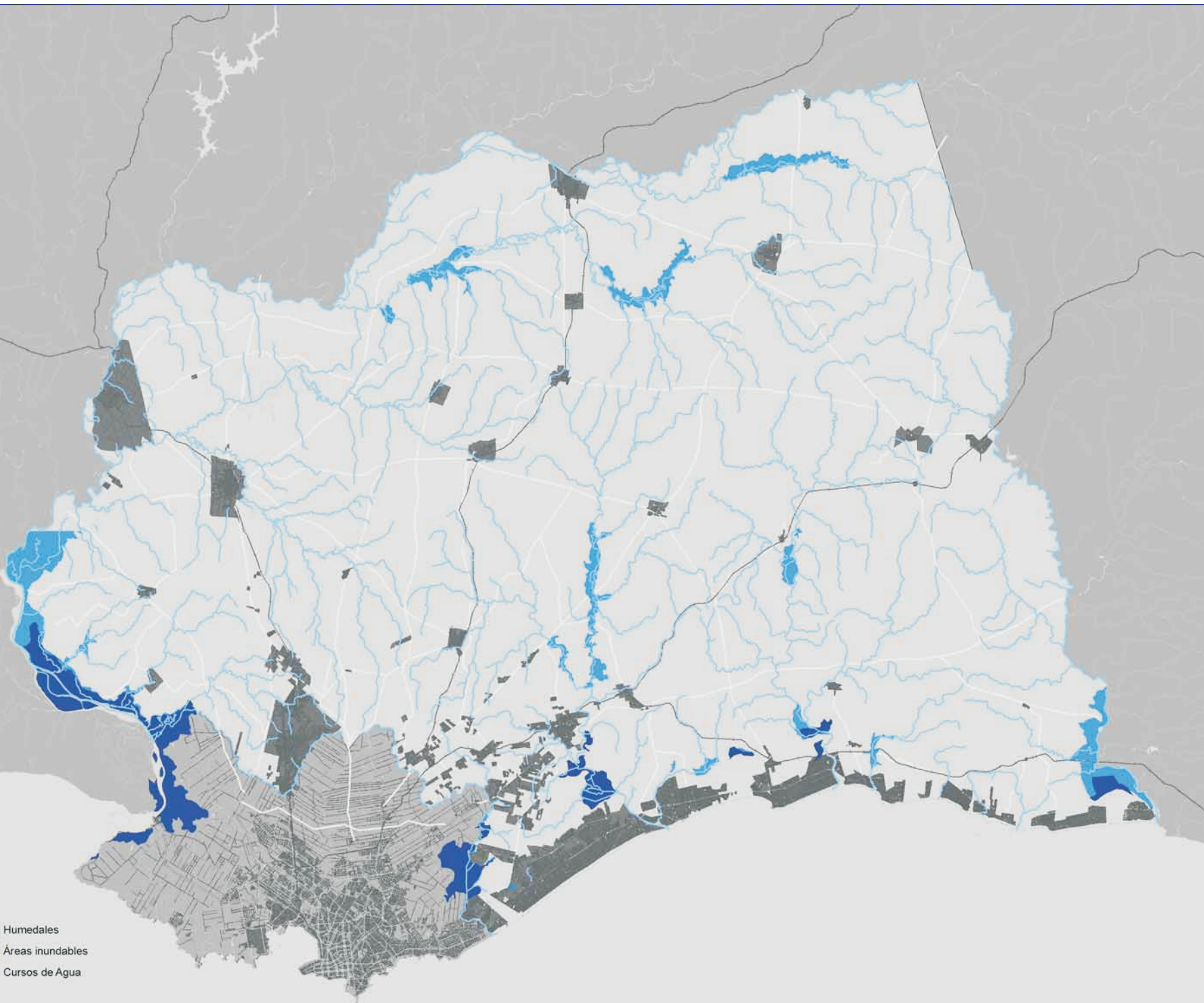
COSTA PLAN


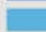
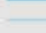
DIRECTRICES DE ORDENAMIENTO
TERRITORIAL PARA LA COSTA DE ORO

Proceso planificador

Lámina: 7



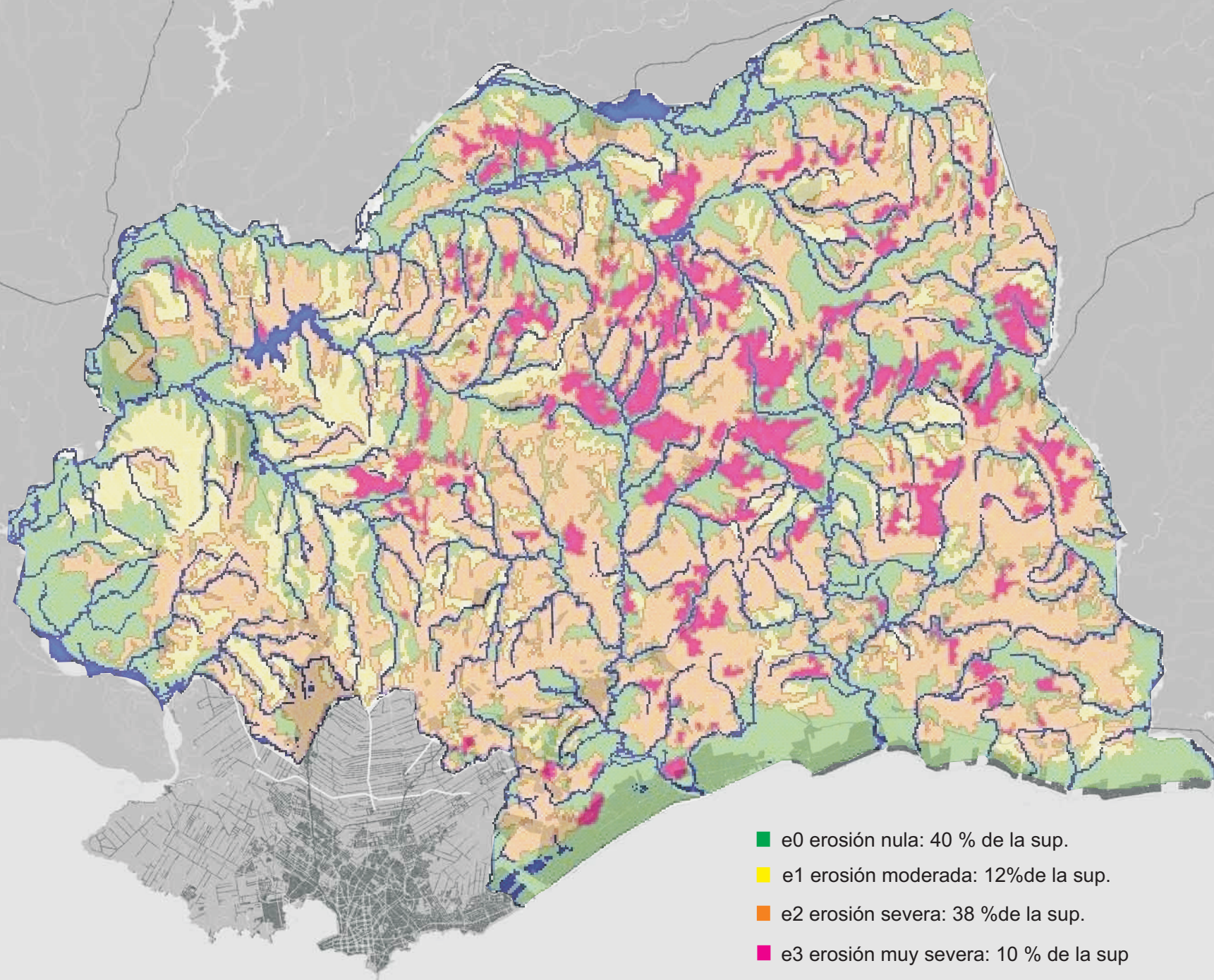


-  Humedales
-  Áreas inundables
-  Cursos de Agua

Hidrografía.
Cursos de agua principales, humedales y áreas inundables.

Lámina: 8





Suelo - Erosión.

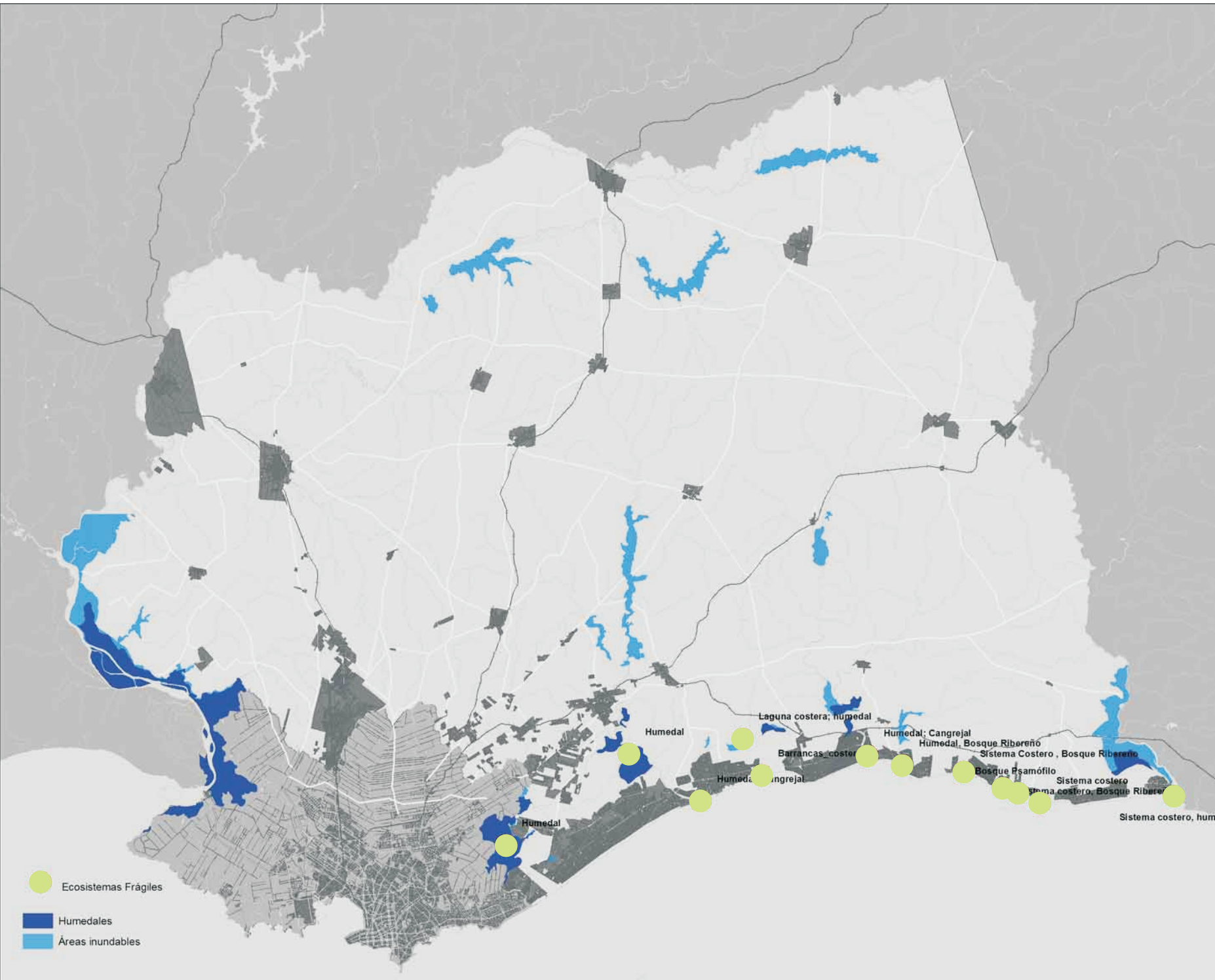
Lámina: 9






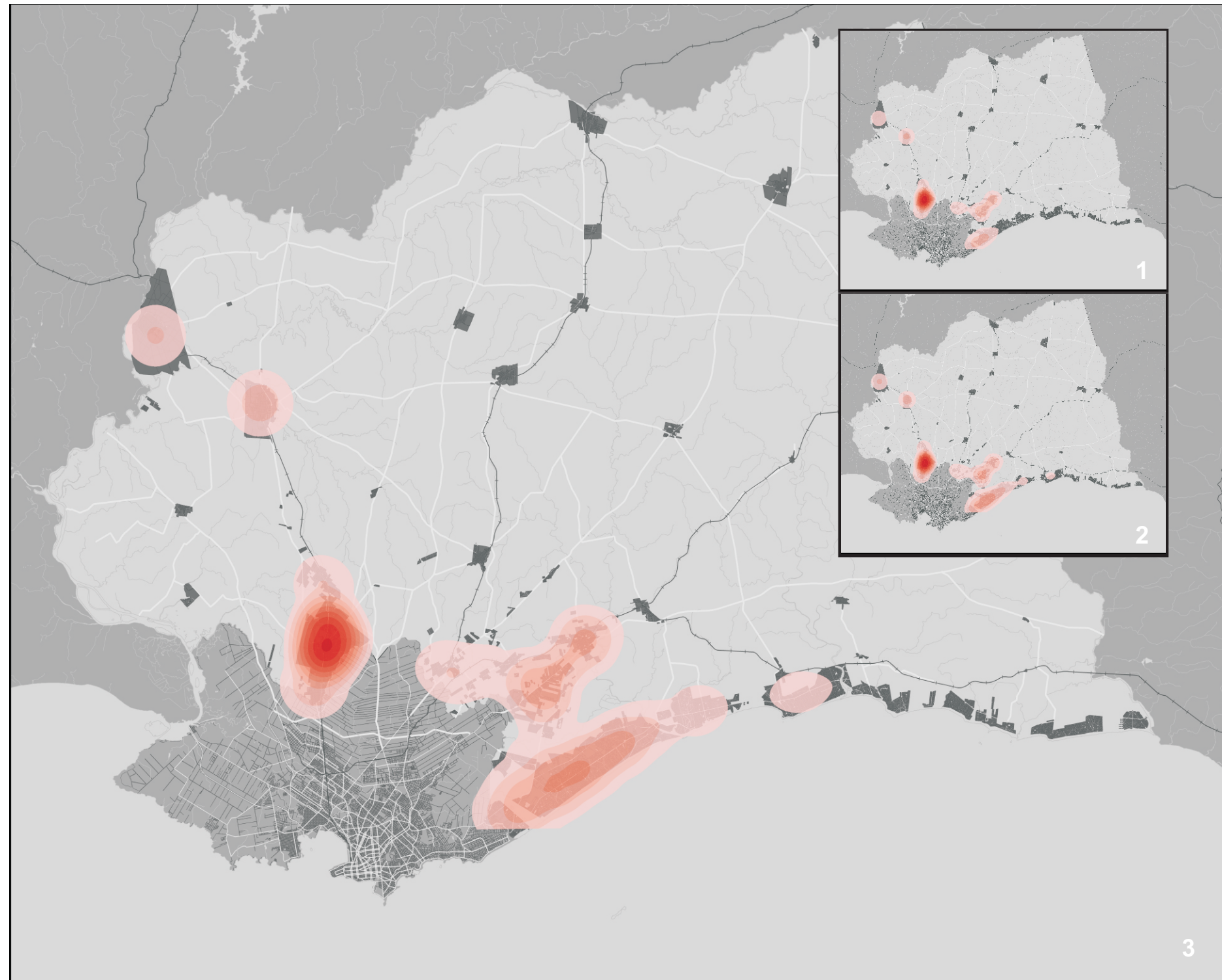
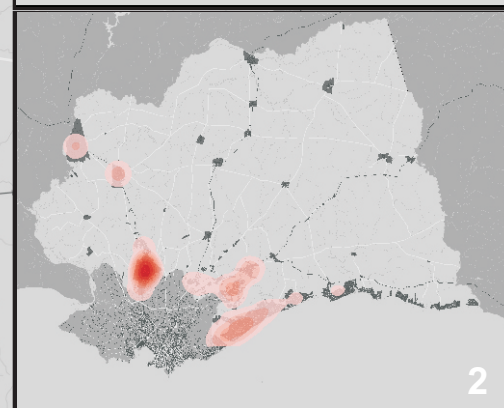
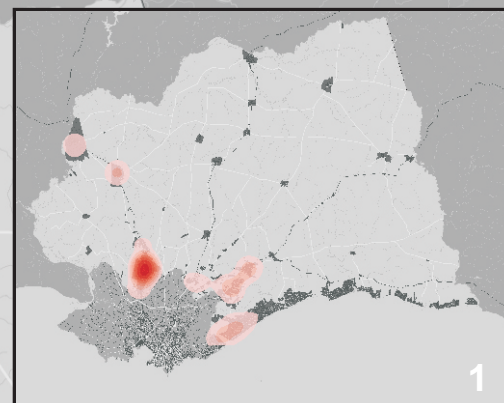
Ecosistemas vulnerables.

Fuente: Dir. Gral. Gestion Ambiental- IMC-

Lámina: 10



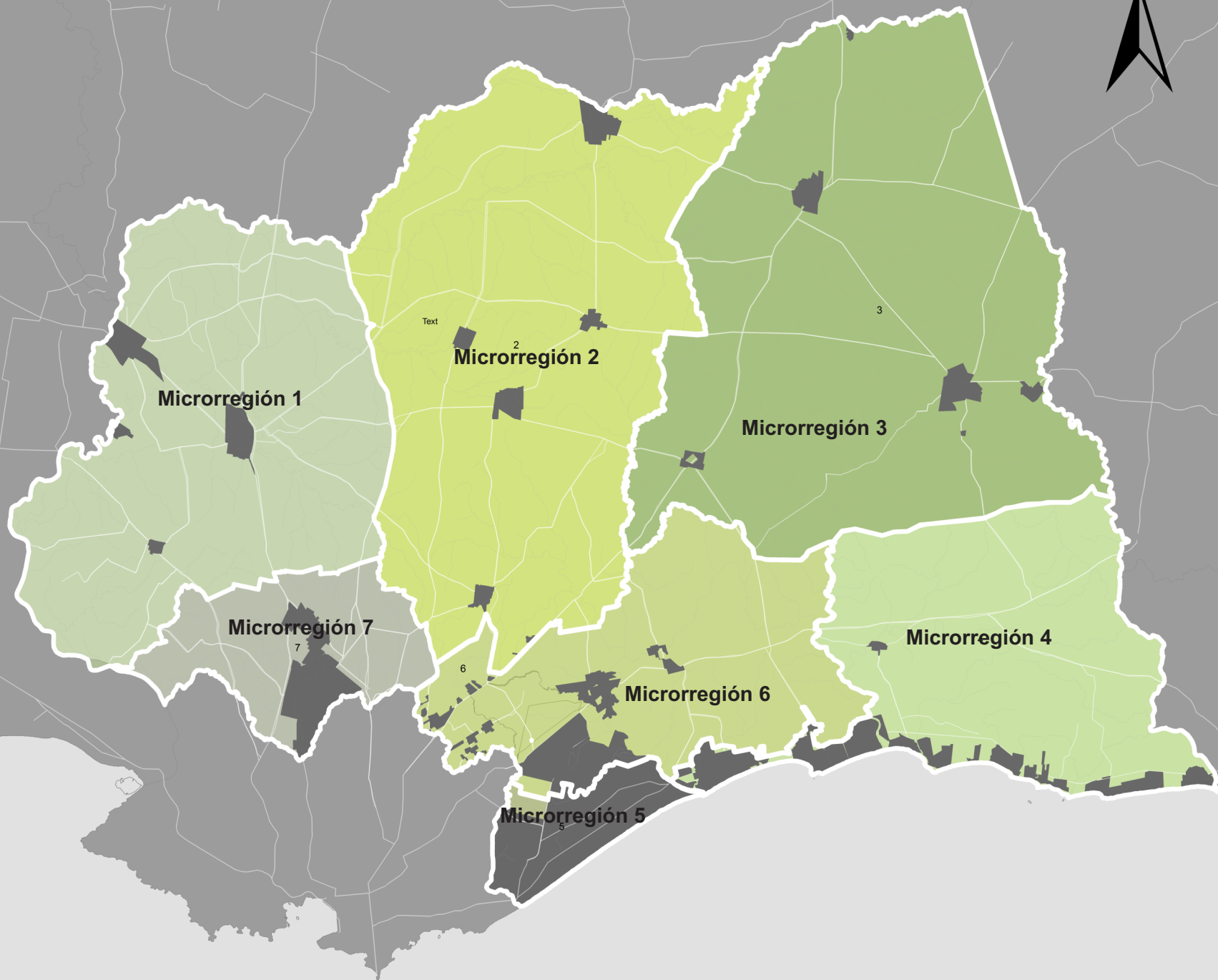
-  Ecosistemas Frágiles
-  Humedales
-  Áreas inundables



Expansión de la
mancha urbana

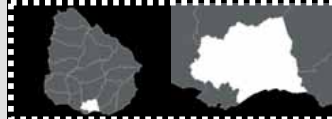
Lámina: 11

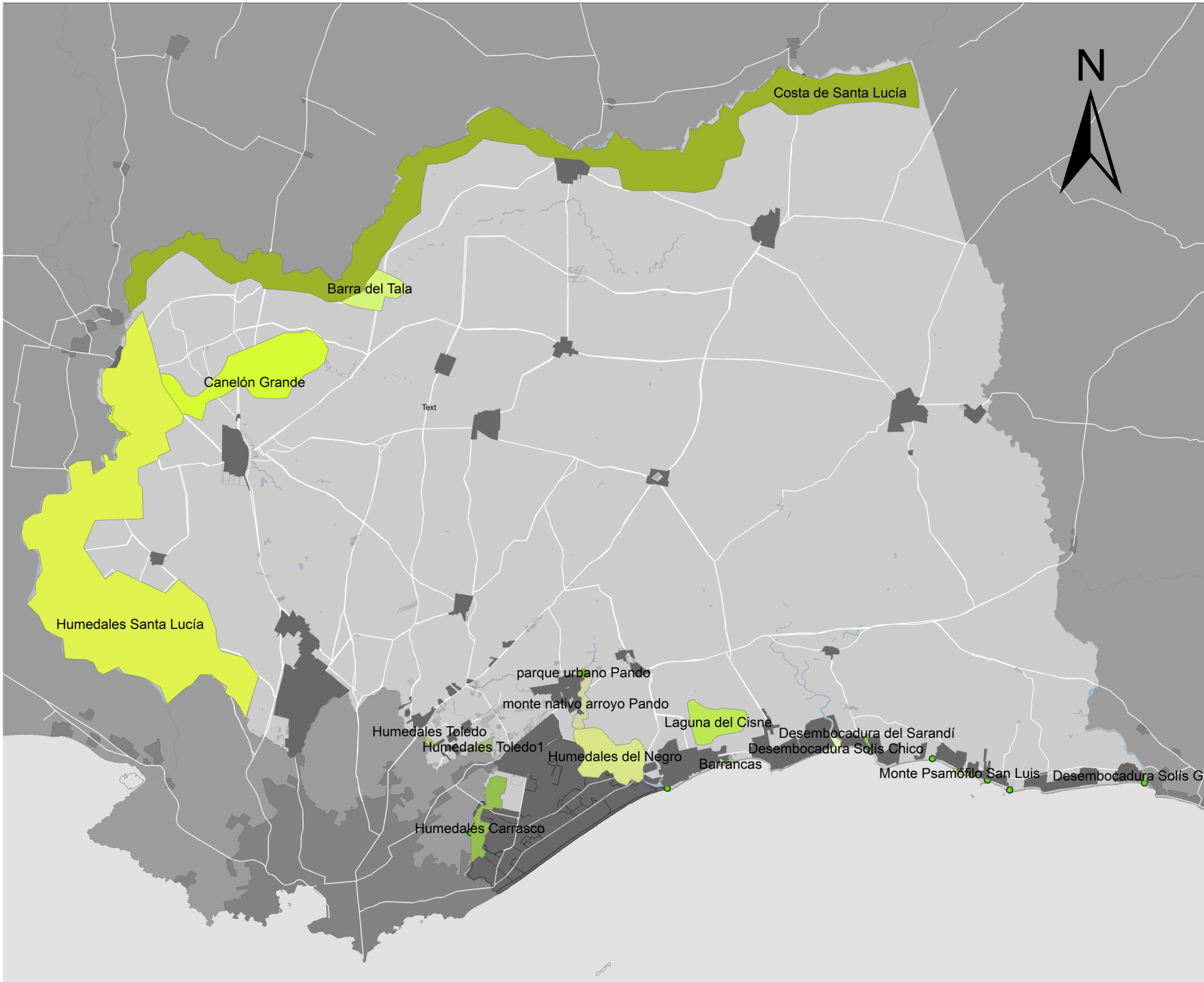




Asociación de
Municipios-

Lámina: 12

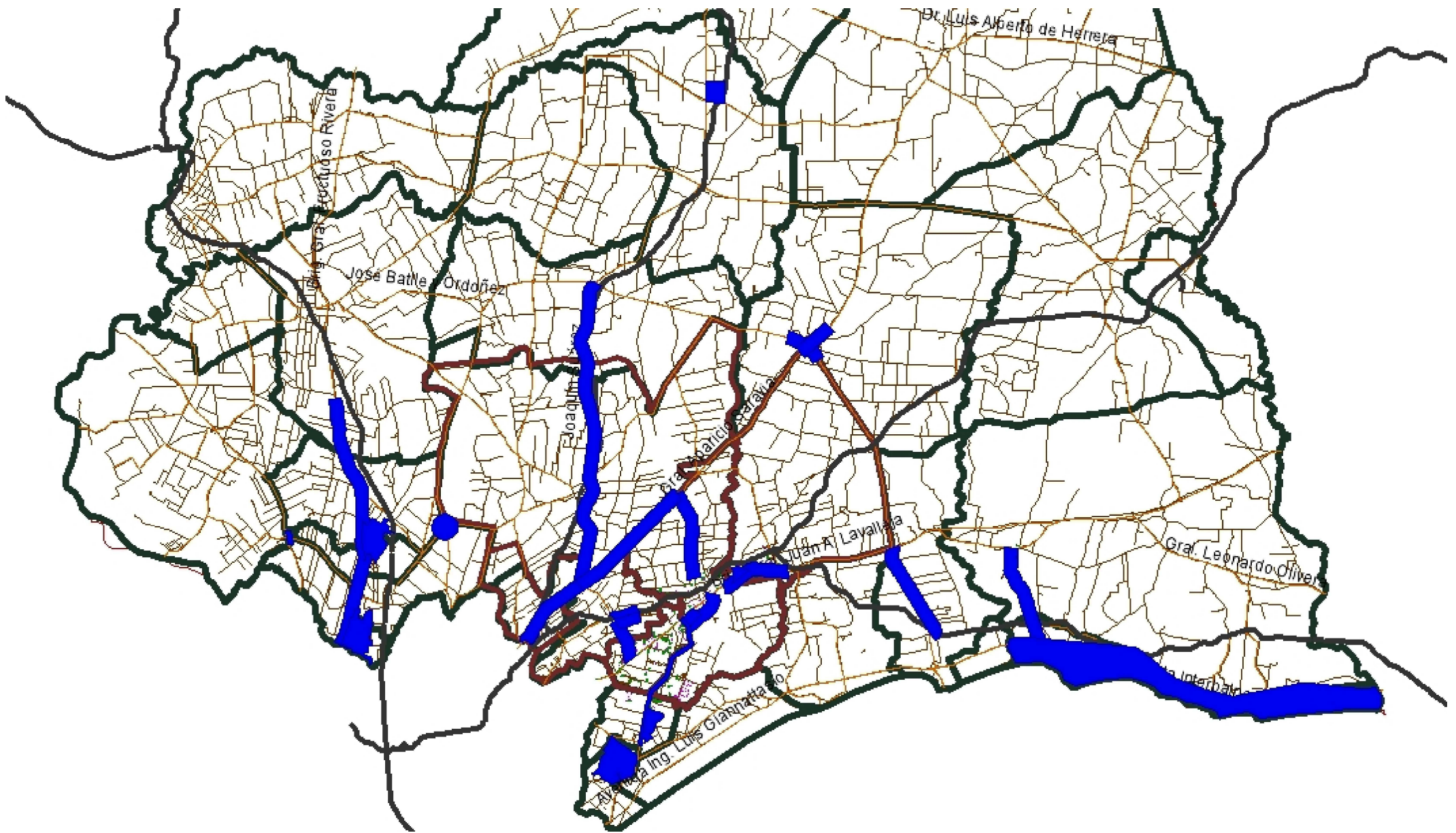




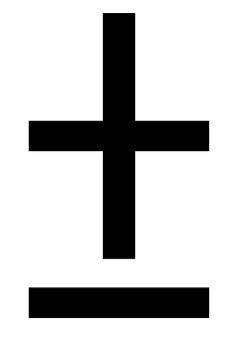
Convenio MVOTMA-IMC
Directrices de Ordenamiento Territorial del Departamento de Canelones

Áreas de alta
vulnerabilidad ambiental
Lámina: 13





ACTUALIZADO 2015

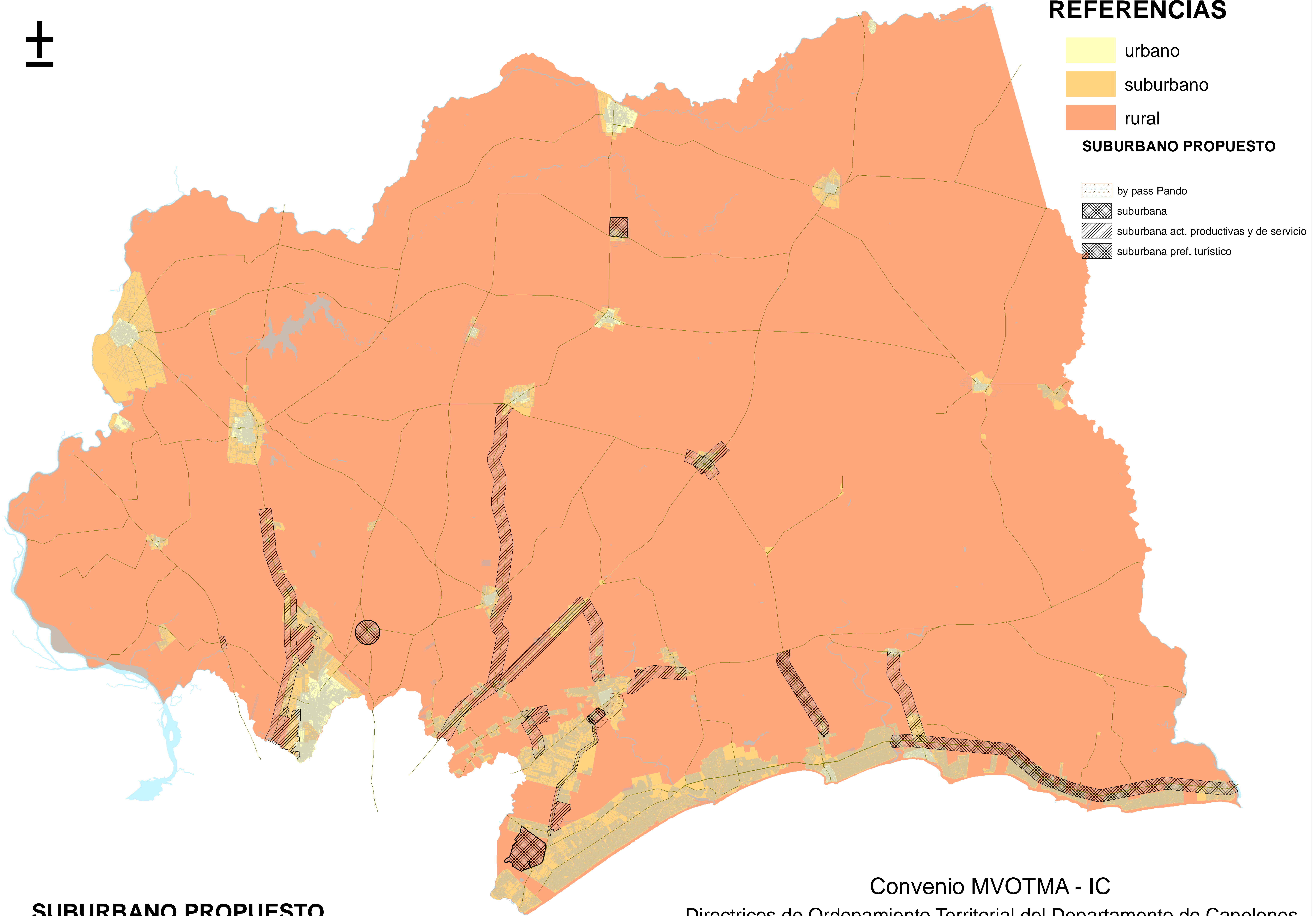


REFERENCIAS

- urbano
- suburbano
- rural

SUBURBANO PROPUESTO

- by pass Pando
- suburbana
- suburbana act. productivas y de servicio
- suburbana pref. turístico



SUBURBANO PROPUESTO

Convenio MVOTMA - IC

Directrices de Ordenamiento Territorial del Departamento de Canelones